

acoustic booths

Treehouse THS 1, THS 2, TH 4 and Quadra QD SBG

safety and proper operation

Requirements for the safe use of furniture – lockable acoustic booths:

1. Reading this manual and following the requirements will ensure safe and long-lasting use of the product.
2. The product is intended for indoor use. It is equipped with an internal electrical system with the option of controlling the intensity of the light and an air exchange system.
3. Do not expose the product to water or use it in rooms with humidity higher than 70%.
4. If liquids are spilled, leave the booth and as a priority disconnect it from the electrical system.
5. In the case of acoustic booths with glass doors, before connecting to the electrical system, make sure that the electrical cables lie freely on the ground and show no signs of damage such as being crushed or cut.
- 6. Do not use the product if the electrical cable is damaged.**
7. Before connecting to the electrical system, check that the socket is protected with a 10A fuse with a residual current circuit breaker <30mA.
8. The product is designed to work with electrical systems with a voltage of 230V.
9. An electrical appliance with a maximum power of 2000W can be connected to the electrical sockets of the installed mediaports.
10. When connecting the booth to an electrical outlet, make sure that the connection will not be interrupted by passing people or moving objects.
11. Do not connect heating elements inside the booth.
12. Do not use the booth without connecting the electrical system.
13. The ventilation system ensures a continuous exchange of air. Do not cover the ventilation openings of the inlet and outlet ducts.
14. Do not use open fire inside the booth and smoking of cigarettes and e-cigarettes is prohibited.

Principles of proper use:

1. Avoid slamming doors, leaning against doors and walls as this can shorten the life of the product and cause damage.
2. Care should be taken when entering and leaving the booth, in particular with regard to the sill, the canopy and passing by persons.
3. Do not leave the doors of the booth wide open as persons passing by may hit them. The product features safety glass, which means that it retains a compact structure with no dangerous shards even when broken.
4. To avoid accidents, ensure that the floor in front of the booth is not slippery.
5. For safety and product life reasons, do not stand on sofas or stools and do not sit or stand on the tabletop.
6. Do not lift the product with a transport trolley as this may damage its frame and covers. To move the product, follow the assembly instructions, use the transport wheels – if supplied with the booth – or partially dismantle the product and assemble it in the desired location.
7. To ensure optimum ventilation inside the booth, the minimum distance between the booth and the wall and ceiling of the room should be 20 cm.
8. The air temperature in the room where the product is located should be between +15°C and +25°C.
9. The product should be located at least 50 cm away from radiators, air conditioners and other heat sources.
10. Avoid direct flooding of the product with water or other liquids.
11. Children under 12 years may only use the booth under adult supervision.
12. Dents in the foam, gradual stretching and waving of the upholstery material are natural signs of seat use.

acoustic booths

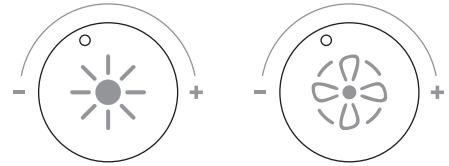
Treehouse THS 1, THS 2, TH 4 and Quadra QD SBG

user's manual

Light and ventilation control

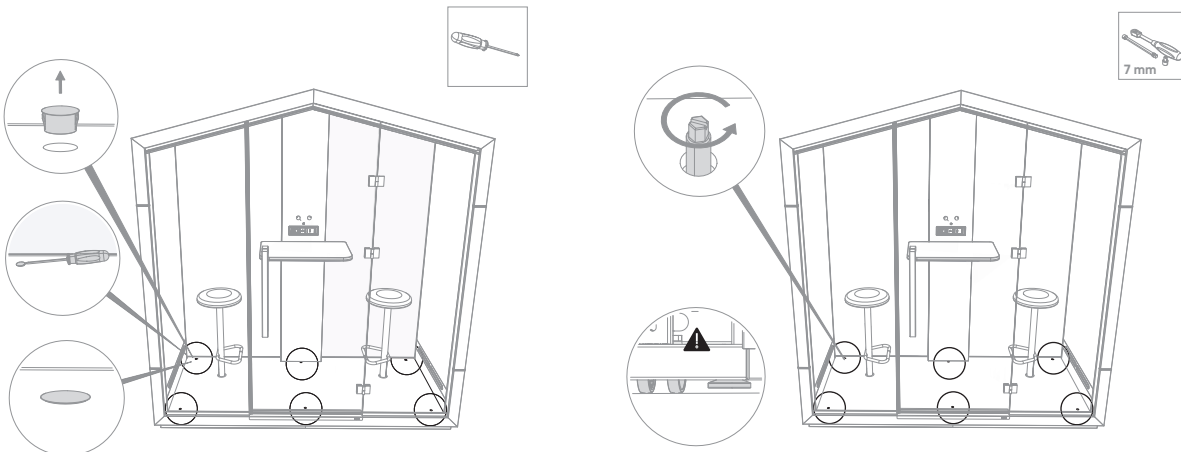
(applies to THS 2, TH 4 models)

1. The knobs are located above the tabletop on the media panel.
2. The left knob is used to adjust the light intensity.
3. The right knob is used to adjust the ventilation rate.



Booth levelling

1. Levelling of the floor is essential for the stability and functionality of the booths.
2. This is done by adjusting the feet with a screwdriver. To expose them, pull out the covers located in the floor.
3. Ensure that the booth stands on its feet and not on the transport wheels, which are only used to move the booth.



bejot:

www.bejot.eu

acoustic booths

Treehouse THS 1, THS 2, TH 4 and Quadra QD SBG

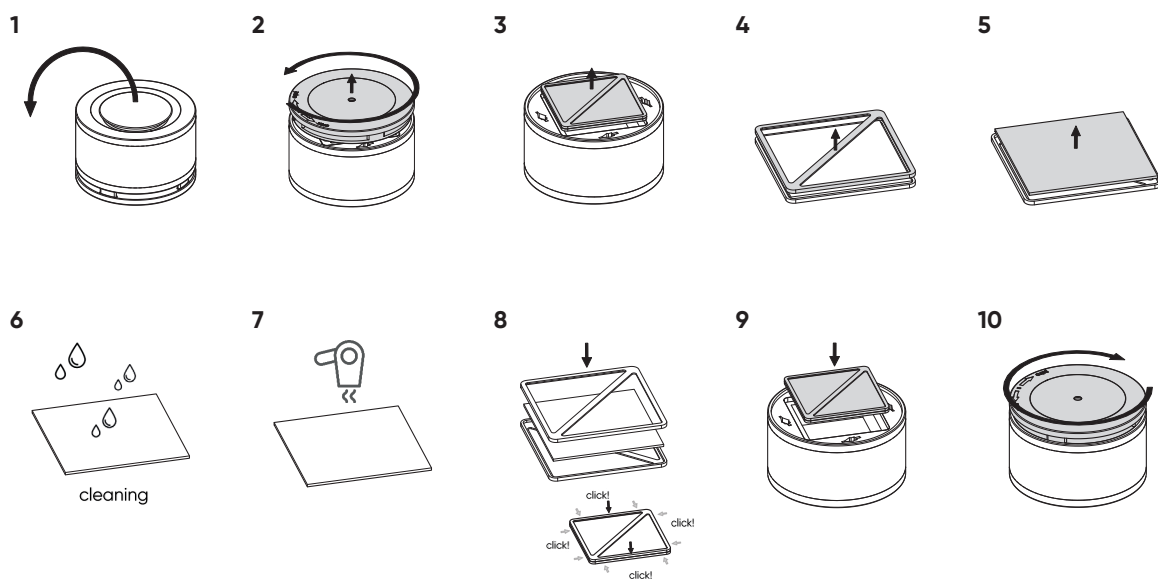
cleaning and care

Cleaning and care:

1. Upholstered parts should be kept clean and protected from any soiling, especially grease, sweat, lubricants etc.
2. If there is any dirt on the upholstery, try cleaning with a cloth dampened in water as soon as possible. If dirt remains, use a mild detergent. First, make a test in an inconspicuous area to ensure that the product will not discolour the upholstery.
3. Avoid intense cleaning in a single spot, as this can cause the fabric to wrinkle.
4. Glass doors and walls and other surfaces are not washable and should not be written or painted on.
5. Use a dry and soft cloth to clean dust and dirt from tabletops and other smooth parts of the product. Never use solvents or other corrosive substances.
6. Use a soft, damp cloth to clean glass surfaces. For heavier dirt, an ammonia-free glass cleaner can be used.
7. Under no circumstances should sharp tools or coarse or aggressive cleaning agents be used to clean the product.

Air purifier

Rinse the filter of the air purifier under running water once every two months and after drying reinstall it in the air purifier according to the instructions below.



bejot:

www.bejot.eu